

GHL-10 Glass-Vu Hybrid Loader

Simple cleaning and efficient, patented filter cleaning

The Maguire GHL loaders come with a patented filter cleaning that completely clears the filter with a blast of air, while ensuring the best air to material mixture is achieved for optimum loading.



Efficient flow of material

Rotating the feed tube ring allows the best air to material mixture for efficient material flow rates, without clogging.

Optimal loading

Optimum loading and prolonged life of the filter is achieved by adjusting the load time and feed tube settings so that the material flows into the loader consistently and fills up to the top of the glass.

Loader control parameters

Detailed changes to the loader control parameters can be easily made via the optional control pendant. The pendant may be disconnected after changes are made with no loss of settings.

Easy to operate

User-friendly load set times allow the operator to fill the glass chamber to the desired level. Load time can be set from 2 to 60 seconds.

Patented filter blow-back

The patented filter cleaning blow-back completely clears the filter and can be set to occur at the end of every load to avoid fines from collecting on the filter.

Simple access and ease of cleanout

The filter is easily accessed via a hinged, slanted lid to enable filter cleaning or replacement as and when required.



Easy servicing of motor

The entire motor lid can be completely removed from the loader for quick and easy servicing or replacement.

Easy material change overs

Ease of clean-out allows for quick and easy material changeovers.



Variable vacuum motors

The GHL Loader is available with either 115 or 230-volt single phase power to meet your specific needs.

Simple alarms

Audible and visual alarms will notify the user if material is not loading correctly.

Loading options

The GHL Loader is capable of connecting to a proportional valve, purge valve and an output for an auxiliary alarm device.

Easy set-up and monitoring

Clear borosilicate glass centre section allows for full view of loading and easy setup and monitoring.

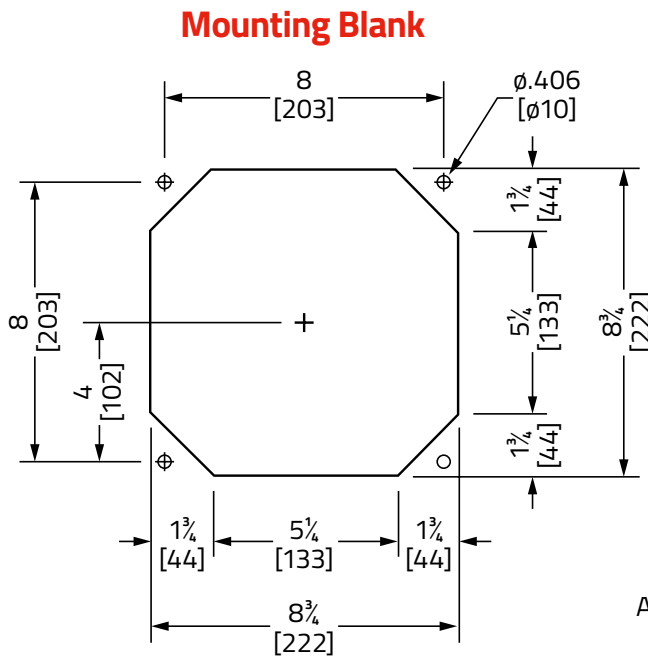


Four Steps to Easy Installation

The design is simple and intuitive and avoids confusing interfaces that can be complicated to set up production. Installation is finished in just four easy steps:

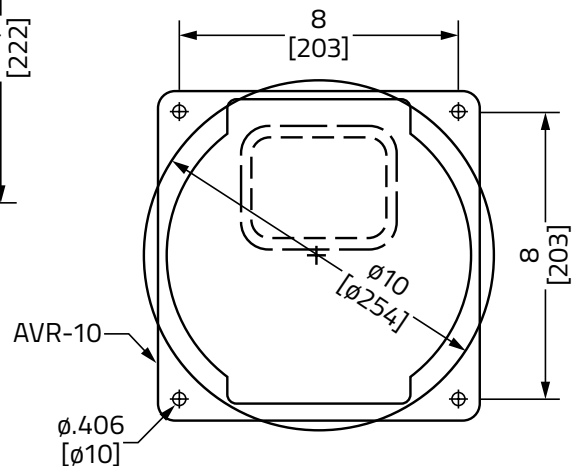
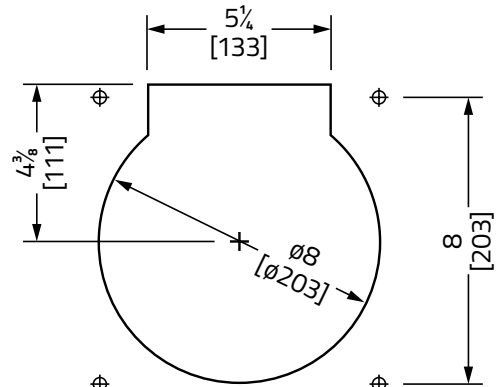
- 1 MOUNT** the GHL-10 to your hopper – see Mounting the Maguire GHL Loader drawing below.
- Install the **MATERIAL HOSE**, secured with hose clamps at both ends, **FROM THE LANCE TO THE MATERIAL INLET TUBE OF THE LOADER.**
- INSTALL A FLEXIBLE COMPRESSED AIR LINE** to the fitting and connect to clean, dry compressed air supply 80 psi.
- PLUG THE POWER CORD** into an appropriate 120V power source.

Mounting the Maguire GHL Loader



DIMENSIONS
US (inches)
SI (mm)

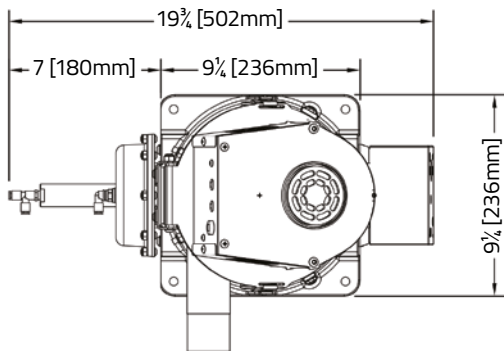
Mounting on ϕ 8" hole



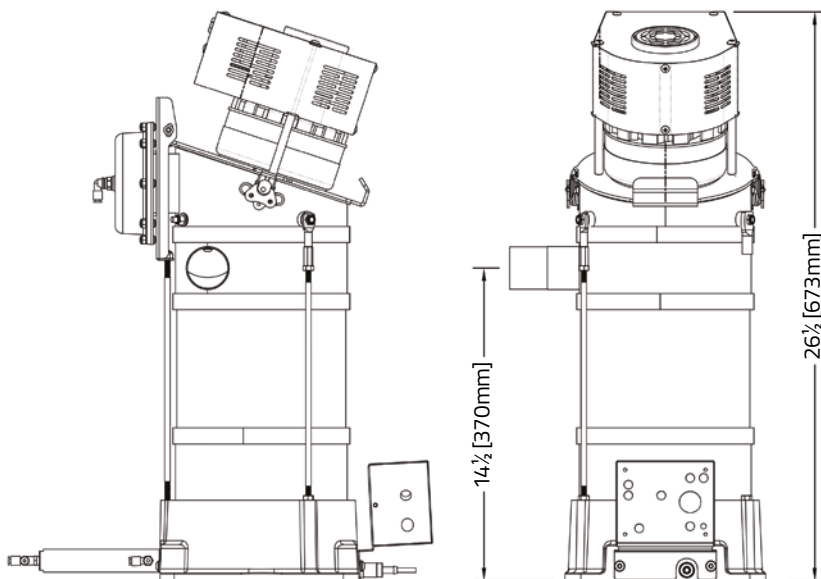
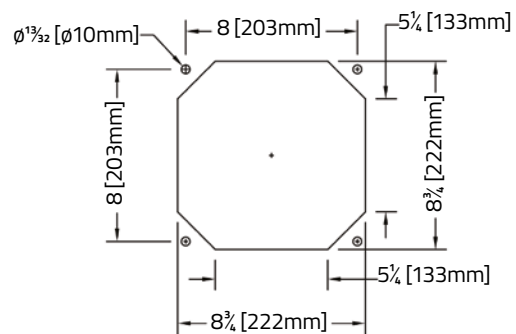
Mounting on ϕ 10" hole

Operating the GHL Glass-Vu Loader

1. The feed tube joins air with material and it should be plunged (and kept) in the material supply. Ensure that the upper section of feed tube remains above the material level.
2. Adjust load time.
3. To allow optimum loading and a prolonged filter life, adjust the load time and feed tube settings so that material flows into loader consistently and fills to the top of the glass. Filling the loader to a higher level will encourage premature filter blinding.
4. Rotate the feed tube ring for the best air to material mixture. The best mixture of air and material will allow material to flow efficiently, with the right proportion of conveying air, without clogging or rapid wear to the hose.



GHL-10 Mounting Pattern



MAGUIRE®

Intelligent Simplicity

MAGUIRE WORLDWIDE DISTRIBUTION LOCATIONS



Maguire USA

Aston, PA, USA
T: +1 610 459 4300
F: +1 610 459 2700
E: info@maguire.com

Maguire Canada

Ontario, Canada
T: +1 905 879 1100
F: +1 905 879 1101
E: info@maguirecanada.com

Maguire Europe

Staffordshire, UK
T: +44 1827 338 280
F: +44 1827 338 285
E: info@maguire-europe.com

Maguire IMEA

Dubai, UAE
T: +971 4 881 6700
E: info@maguire-imea.com

Maguire Asia

Singapore
T: +65 6848 7117
F: +65 6542 8577
E: magasia@maguire-products.com.sg

Maguire China

Shanghai
T: +86 21 5882 3410
F: +86 21 5882 3420
E: amber@maguirechina.com



@MaguireProducts



in Maguire-Products

info@maguire.com

www.maguire.com