

The most popular blender worldwide



Model 240R

Plastics processors all over the world are choosing Maguire Weigh Scale Blenders more than any other. Three out of four gravimetric blenders purchased are manufactured by Maguire Products. Over 76 models are available to blend up to twelve components at rates up to 5,000 lb/hr – 2,270 kg/hr.

All Materials Metered by Weight

- Accuracy is constantly monitored.
- Automatic compensation for material variations.

Advanced Dispense Technology

- Batch to batch blend ratio is held to 0.1%.
- Advanced error-correction logic recognizes even miniscule errors and makes a correction for perfect blend ratio every time.
- Micro-Pulse™ dispense capability is 3 to 4 pellets per dose.

Very Simple Operation

- Load hoppers with material: Re grind, Natural, Color and Additive.
- Set thumbwheel switches for percentage desired.
- Turn controller on.
- The unit now operates automatically, adding components in the proper percentages. If material runs out, an alarm sounds.

Immune to Vibration

- Load cell readings that have been compromised by machine shock or vibration are detected and discarded.
- Blenders may be mounted directly on the process machine.

Automatic Recalibration

- Material flow rate is constantly monitored, and each batch is followed by a correction routine to deliver perfect dispense weights.

Direct Setting of Percentages; No Calculations

- Enter settings for percentage of color, additive or regrind on the thumbwheel switches, and the system does the rest.



MicroBlender

More options...more sizes...more choices

SERIES 900

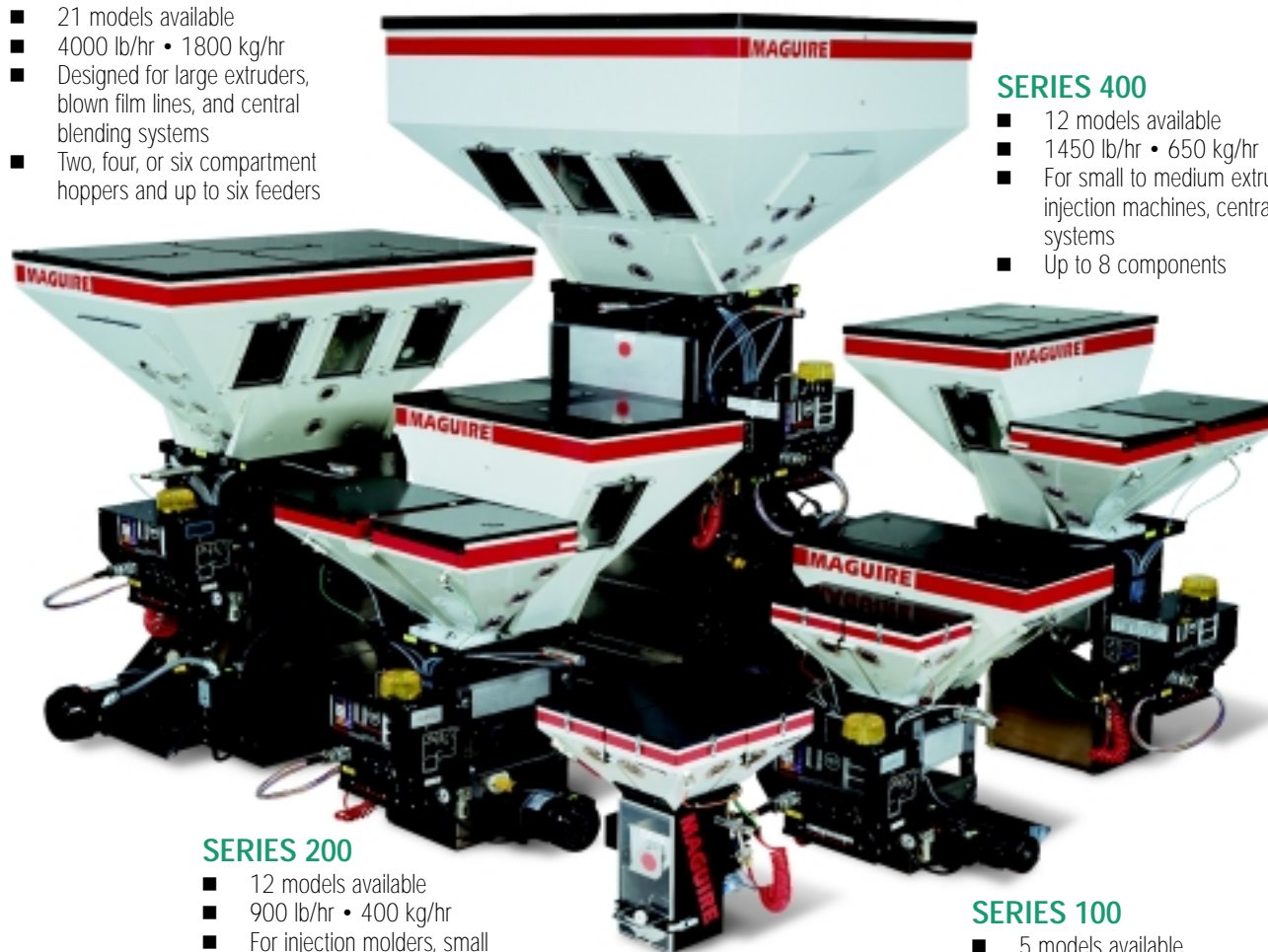
- 21 models available
- 4000 lb/hr • 1800 kg/hr
- Designed for large extruders, blown film lines, and central blending systems
- Two, four, or six compartment hoppers and up to six feeders

SERIES 1800

- 21 models available
- 5000 lb/hr • 2270 kg/hr
- Ideal for high output extruders and large central blending systems
- Two, four, or six compartment hoppers and up to six feeders

SERIES 400

- 12 models available
- 1450 lb/hr • 650 kg/hr
- For small to medium extruders, large injection machines, central blending systems
- Up to 8 components



SERIES 200

- 12 models available
- 900 lb/hr • 400 kg/hr
- For injection molders, small extruders, and central blending
- Up to 8 components

MICRO BLENDER

- 5 models available
- 140 lb/hr • 64 kg/hr
- Ideal for small injection machines
- Up to 4 components

SERIES 100

- 5 models available
- 450 lb/hr • 200 kg/hr
- For injection molders and small extruders
- Up to 4 components

Maguire puts you in control



Maguire controls are available in two types of software: Four component and Twelve component. Four component software is designed for a conventional mix of natural, regrind and up to two additives. Twelve component software allows complete flexibility for any conceivable blend.

Both versions of software share many special standard features:

- Settings entered directly; no programming required.
- Settings may be locked-in to limit operator access.
- Upper limits may be placed on settings.
- Two-level password allows access to change machine parameters.
- Printer port allows documentation of blend accuracy, blend content and/or material usage.
- Hundreds of pre-programmed custom applications are included.
- Plus many additional features.

Control your productivity through advanced materials management:

Gravimetric Gateway™ Networking Software

In any plastic processing facility gravimetric blenders play a unique role. They control and measure the exact weight of each material component as it enters the process. Gravimetric Gateway, available as an option, is a networking software package that allows plastic processors to utilize this information to its fullest potential.

Take a test drive:

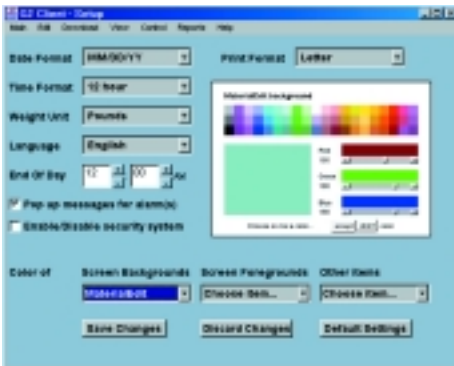
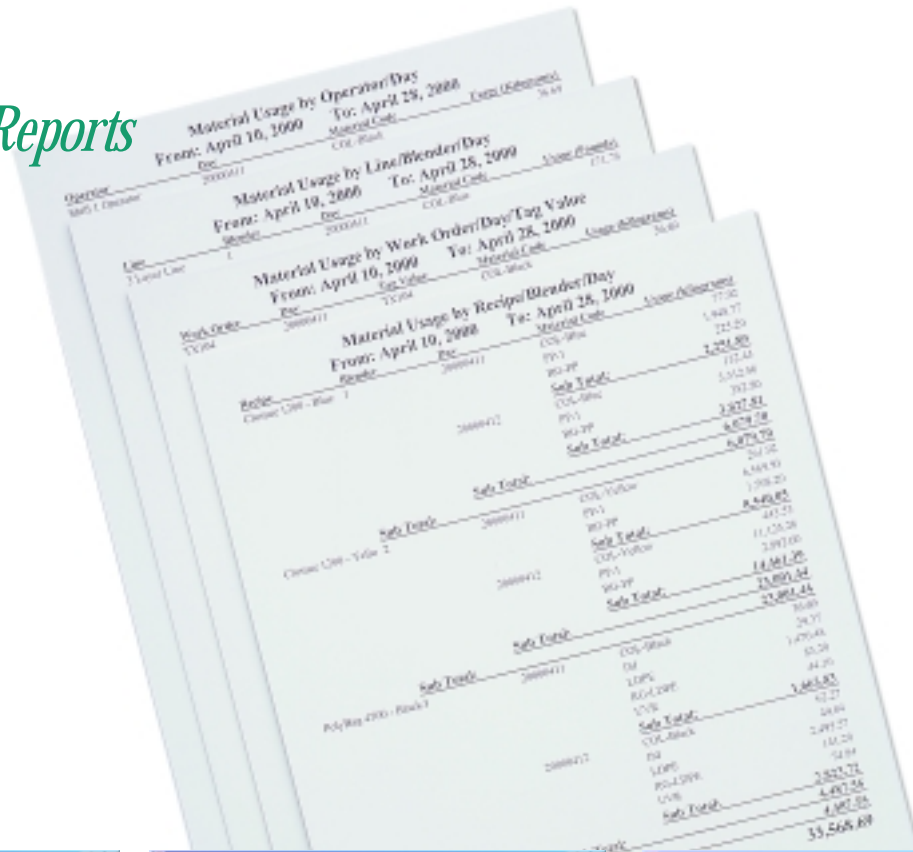
Gravimetric Gateway can be tested in demo mode free of charge (go to <http://www.maguire.com/download.htm#G2-SOFTWARE>).

Key Gravimetric Gateway™ (G2) features:

- **Material Usage Reports:** Usage reports can be generated based on many combinations of criteria such as time, date, blender ID number, part number, work order number, operator number, recipe number, material type, etc.
- **Alarm Functions:** G2 detects any alarm in the network and reports location and description of the alarm.
- **Ability To Download/Update Recipes:** G2 users can download recipes to be certain that the correct recipes are running on the proper machines. Recipe settings may be updated from a remote location according to part number, work order number, operator number, recipe number, etc.
- **Security:** Extensive security functions are provided to selectively limit access to recipes and blender operation. There are 3 classes of user password security with predefined templates: Administrator, Supervisor, and Operator. Each user's privileges may be further refined by adjusting over 30 different security fields.
- **Advanced Inventory Management Programs:** Inventory levels can be monitored, and reorder points can be flagged to notify purchasing when low levels are reached. In addition a material accounting record allows entry of material cost to track inventory value on a real-time basis.
- **Instant Access To Maintenance Updates and Upgrades:** Software updates and upgrades are immediately available over the Internet.

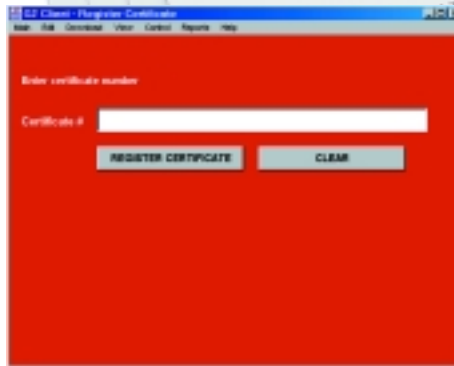
Go to <http://www.maguire.com/download.htm> where new programs or maintenance updates may be downloaded directly to the user's system.
- **Multilingual Versions:** G2 is available (by 4th Qtr 2000) in English, German, Spanish, Italian, French, and Dutch.
- **Multiplant Networking:** G2 technology expands the potential for multiplant and even multinational networking.

Material Usage Reports



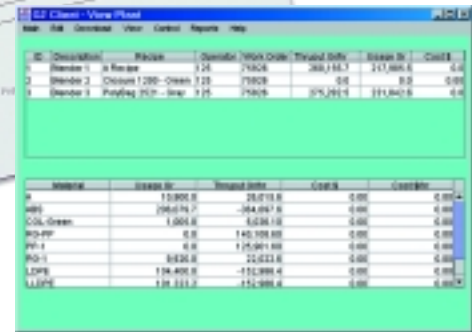
SETUP

Setup is simple and flexible.



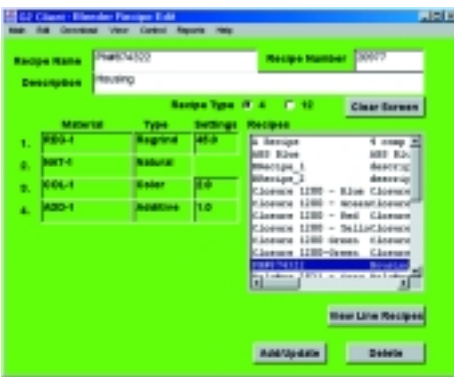
ACTIVATION CODE

Additional blenders may be added to G2 with the purchase of a license. The Load Certificate screen makes it easy to enter activation codes, which enable additional sites on the system.



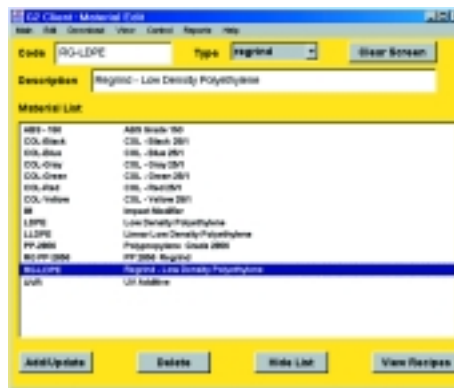
CONSTANT SCAN

Blenders on the network are constantly monitored for any changes such as alarm status, throughput, settings, work order number, etc.



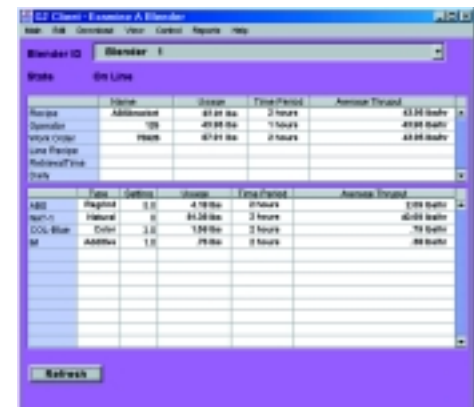
RECIPE LIST

Recipes are maintained in a database file for quick access during downloading.



MATERIAL LIST

A database of materials makes recipe building simple.



EXAMINE A WSB

Gives numerical and graphical information of a blender's current totals and settings.

MicroBlender



The WSB-MB MicroBlender, the smallest weigh scale blender in the world, features the latest technology in gravimetric blending. The MicroBlender makes the benefits of gravimetric blending accessible and affordable to plastics processors operating small machines. The MicroBlender is capable of blending up to 4 components at a rate of 140 lb/hr – 64 kg/hr. All material hoppers are removable for fast and convenient material changes. The Maguire Weigh Scale Blender controller is remotely mounted providing easy access for the operator.

- 5 models available
- 140 lb/hr – 64 kg/hr
- 400 gram batch (0.88 lb)
- Ideal for small processing machines
- Up to 4 components



∂ All MicroBlender material hoppers are removable for fast and convenient material change.



∂ The MicroBlender controller is remotely mounted providing easy access for the operator



∂ AVR-1 Clear-Vu™ receivers are ideal for loading micro-hoppers.

100 Series



WSB-140R

The 100 series Maguire Weigh Scale Blender blends up to 6 components at rates of up to 450 lb/hr – 200 kg/hr. The compact design of the 100 Series is suitable for direct on-the-throat mounting or beside the machine installation. Model WSB-140 includes a 4-compartment hopper with easy access to material contact surfaces. For processors with frequent material changes the model WSB-140R is available with a 2-compartment stationary bin for natural resin and regrind and two smaller removable bins. The lightweight removable bins are equipped with integral shutoffs to eliminate spillage, and hinged lids for fast, easy cleanout.

- 5 models available
- 450 lb/hr – 200 kg/hr
- 1 kg batch (2.2 lb)
- For injection molders and small extruders
- Up to 6 components



Lightweight removable bins are available in two sizes; micro bin shown above.

MicroBlender and 100 Series Specifications

MODEL	BATCH SIZE (kg)	COMPONENTS	SLIDE GATES	VERTICAL VALVES	CAPACITY	OVERALL DIMENSIONS L x W x H (approx.)	OVERALL WEIGHT (approx.)
WSB-MB MICRO	0.4 kg	4	0	4	up to 140 lb/hr or 64 kg/hr	16 x 16 x 23.5 (in) 410 x 410 x 600 (mm)	50 lb – 23 kg
WSB-100 WSB-140 WSB-140R WSB-150R WSB-160R	1 kg	4 4 5 6	4 2 2 2	0 2 3 4	up to 450 lb/hr or 200 kg/hr	28.5 x 26.5 x 32 (in) 730 x 670 x 820 (mm)	150 lb – 68 kg

200/400 Series



WSB-440

The 200 and 400 Series Maguire Weigh Scale Blenders can be applied to meet the requirements of a variety of blending applications. With throughputs ranging from 900 lb/hr – 400 kg/hr to 1450 lb/hr – 650 kg/hr these two models have the flexibility to be applied on-the-throat for medium sized throughput applications, next to the machine for easy access or on a specialized stand for central blending. These models have the capability of blending up to 8 components and are available with lightweight removable hoppers for fast, easy cleanout.

400 SERIES (Left)

- 12 models available
- 1450 lb/hr – 650 kg/hr
- 4 kg batch (8.8 lb)
- Up to 8 components
- For injection molders, small extruders and central blending

200 SERIES (Right)

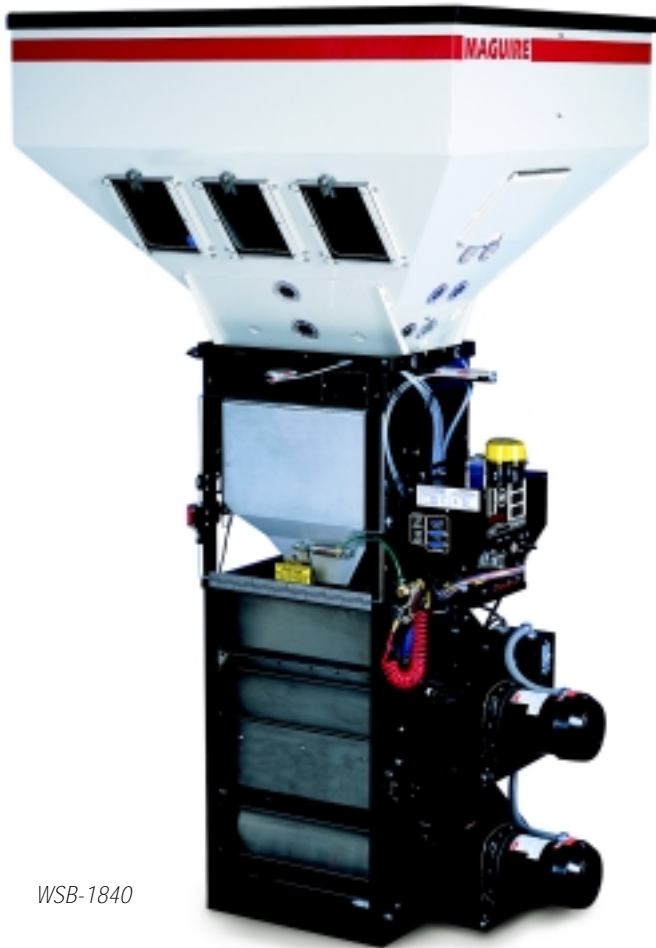
- 12 models available
- 900 lb/hr – 400 kg/hr
- 2 kg batch (4.4 lb)
- Up to 8 components
- For injection molders, small extruders and central blending



WSB-240R

MODEL	BATCH SIZE (kg)	COMPONENTS	SLIDE GATES	VERTICAL VALVES	CAPACITY	OVERALL DIMENSIONS L x W x H (approx.)	OVERALL WEIGHT (approx.)
WSB-200	2 kg	2	2	0	up to 900 lb/hr or 400 kg/hr	32.5 x 26.5 x 42 (in) 826 x 673 x 1067 (mm)	220 lb / 100 kg 260 lb / 118 kg 300 lb / 136 kg
WSB-220		3	2	1			
WSB-221		3	2	1			
WSB-222		4	2	2		41.5 x 28 x 46 (in) 1054 x 711 x 1168 (mm)	230 lb / 105 kg 270 lb / 123 kg 310 lb / 141 kg 255 lb / 116 kg 260 lb / 120 kg
WSB-240		4	4	0			
WSB-241		5	4	1			
WSB-242		6	4	2			
WSB-240R		4	4	0			
WSB-260		6	6	0			
WSB-400		4kg	2	2			
WSB-420	3		2	1			
WSB-421	3		2	1			
WSB-422	4		2	2	41.5 x 28 x 51.5 (in) 1054 x 711 x 1308 (mm)	310 lb / 141 kg 350 lb / 159 kg 390 lb / 177 kg 470 lb / 214 kg 345 lb / 157 kg 355 lb / 161 kg	
WSB-440	4		4	0			
WSB-441	5		4	1			
WSB-442	6		4	2			
WSB-444	8		4	4			
WSB-440R	4		4	0			
WSB-460	6		6	0			

900/1800 Series



WSB-1840

The 900 and 1800 Series Maguire Weigh Scale Blenders are designed to meet the requirements of high throughput extrusion lines, large central blending systems and multiple component plastic recycling applications. These blenders can handle up to 12 components with throughputs of 4000 lb/hr – 1800 kg/hr and 5000 lb/hr – 2270 kg/hr respectively. The 1800 Series blender has a double mix chamber to ensure blend homogeneity in higher volume applications.

1800 SERIES (Left)

- 21 models available
- 5000 lb/hr – 2270 kg/hr
- 18 kg batch (39.6 lb)
- Up to 12 components
- Large extrusion lines, central blending and recycling systems



WSB-940

900 SERIES (Right)

- 21 models available
- 4000 lb/hr – 1800 kg/hr
- 9 kg batch (19.8 lb)
- Up to 12 components
- Large extrusion lines, central blending and recycle systems

MODEL	BATCH SIZE (kg)	COMPONENTS	SLIDE GATES	FEEDERS	CAPACITY	OVERALL DIMENSIONS L x W x H (approx.)	OVERALL WEIGHT (approx.)
WSB-900	9 kg					46.5 x 28.5 x 60 (in) 1181 x 724 x 1524 (mm)	
WSB-940		4	4	0	up to		420 lb – 191 kg
WSB-941		5	4	1	4000 lb/hr		460 lb – 209 kg
WSB-942		6	4	2	or		500 lb – 227 kg
WSB-944		8	4	4	1800 kg/hr		580 lb – 264 kg
WSB-960		6	6	6	0		
WSB-1800	18 kg					46.5 x 40.5 x 87 (in) 1181 x 1029 x 2210 (mm)	
WSB-1840		4	4	0	up to		615 lb – 280 kg
WSB-1841		5	4	1	5000 lb/hr		655 lb – 298 kg
WSB-1842		6	4	2	or		695 lb – 316 kg
WSB-1860		6	6	0	2270 kg/hr		625 lb – 284 kg
WSB-1866		12	6	6	6		

Model WSD Dispenser



Model WSD-920 shown

The Maguire Weigh Scale Dispense System is designed to meet the needs of the rotational molding industry in which obtaining pre-weighed batches of material is an important part of the process. The Dispense System delivers pre-selected weights ranging from 0.1 to 999 pounds or kilograms. When filling rotational molds, target weights frequently vary from one mold to the next. Using the recipe function of the controller, a series of different weights may be retrieved and sequenced according to order of entry and dispensed consecutively and automatically.

Manual or Automatic

The system may be cycled manually by pressing a start button or automatically controlled from a remote relay closure provided by a PLC. For automated systems a "cycle complete" signal, which is available, will initiate the next dispense cycle.

Bar Code Readers

Some Rotational Molders prefer to dispense material into containers and manually fill molds. To automate this process the Dispense System controller will accept a signal from a bar code reader. As a container is moved into position for filling, the bar code is scanned and notifies the Dispense System of the weight that should be dispensed for that container.

Totalizer

The Maguire Weigh Scale Totalizer is a single component device designed to measure, track and document the precise volume of material that passes through it. The Totalizer operates exactly like a blender except only one component is dispensed. The unit has a single compartment hopper and no mixing chamber. The Totalizer controller will display throughput totals at all times.



Model WST-110 shown

A word on accuracy...

Former accuracy claims by Maguire Products were based on the performance of the Weigh Scale Blender over a period of time. Now, thanks to a software technological breakthrough, the Maguire Weigh Scale Blender delivers batch to batch accuracy of 0.1%. This precision is possible due to the manner in which the blender compensates for the two key factors that effect blending accuracy: variation in material flow behavior and vibration.

Material Flow Behavior

Depending on ambient conditions and pellet or granule configuration, material flow rates vary widely. A reliable blending system must monitor and adjust for these flow variations or the accuracy of the blend will be compro-

mised. The Maguire Weigh Scale Blender monitors each dispense looking for variation. Using advanced error-correction logic, the blender controller recognizes and corrects minuscule dispense errors that stem from material flow inconsistencies. The error-correction logic provides constant blend ratio batch to batch.

Vibration

All gravimetric blenders use sensitive load cells to determine weight. Vibration and shock interferes with load cell readings and must be compensated for. Without vibration and shock management, mounting blenders on the processing machine would be impossible. The Maguire Weigh Scale Blender verifies every weight reading. If machine shock or vibration

occurs during a weight reading it is detected, the compromised weight reading is discarded, and a new weight reading is taken. Regardless of the severity of vibration, Maguire blenders may be mounted directly on the throat of a machine. Even injection molders with fast cycling presses can machine-mount blenders and get accurate readings during the shortest molding cycles.

Dispense Device Selection

Maguire Weigh Scale Blenders utilize many different types of dispense devices to accurately meter a variety of ingredients. The selection of a particular dispense device depends on 3 factors: size of blender, volume of dispense and flow characteristics of the ingredient. The following table defines the throughput capability in grams per second of various Maguire dispense devices.

Major Ingredient Devices		
UNIT	DEVICE	FLOW RATE
MicroBlender	1" vertical valve	40 gm/second
100 Series	1.5" x 2.5" valves	250 gm/second
	1.5" x 1.5" valves	150 gm/second
200 / 400 Series	3" round valves	650 gm/second
	2" x 3" valves	650 gm/second
900 / 1800 Series	3" x 6" valves	2500 gm/second
	2" x 3" valves	650 gm/second
Minor Ingredient Devices		
UNIT	DEVICE	FLOW RATE
Removable Hopper	1" vertical valve	40 gm/second
Micro-Pulse™ - Vertical	1" vertical valve	1 gm/second
Micro-Pulse™ - Horizontal	1.5" x 1.5" valves	1 gm/second
0.5" Feeder	1/2" auger	1 gm/second
1" Feeder	1" auger	20 gm/second
2" Feeder	2" auger	50 gm/second

Maguire Extrusion Control Network (MECN)



THE BENEFITS

- **Improved quality with reduced levels of scrap**
- **Reduced costs with raw material savings**
- **Increased line productivity with fast start-up**
- **Quick product changeover**
- **Recipe storage and data collection with G2 software**
- **Alarm and user security**

Maguire Extrusion Control Network (MECN) is for all extrusion processors including blown film, sheet, pipe, profile, coating, laminating and wire and cable. The elimination of yield checks and corresponding manual screw-speed adjustments save labor, improve quality, reduce scrap and contribute to fast payback on these systems. MECN not only allows users to produce a higher quality product, but also offers substantial savings in comparison to processors using outdated extrusion control systems and methods.

MECN is the ultimate integration of gravimetric extrusion control and gravimetric blending. Compared to conventional Extrusion Control Systems, the Maguire system eliminates redundant weigh hoppers and redundant gravimetric controls. It also provides the integration of both extruder output control and gravimetric blend percentages in a simple and cost effective configuration.

MECN is a totally gravimetric system providing continual monitoring and adjustment of extruder flow rate, regardless of changes in material flow characteristics. For co-extrusion applications MECN provides a simple and reliable method to establish and continuously monitor layer ratios.

HOW DOES IT WORK?

The extrusion control network works by...

1 – Continuously analyzing material flow data retrieved in real time by one or more blenders, which simultaneously communicate with each other.

2 – Calculating in milliseconds the changes that are required in extruder-screw revolutions per minute (rpm) or line speed to keep throughput constant and maintain precise ration of all layers in coextrusion applications.

Low-voltage (0-10 volt) shielded signals are used for all network communications.

Extrusion Control Networking Software

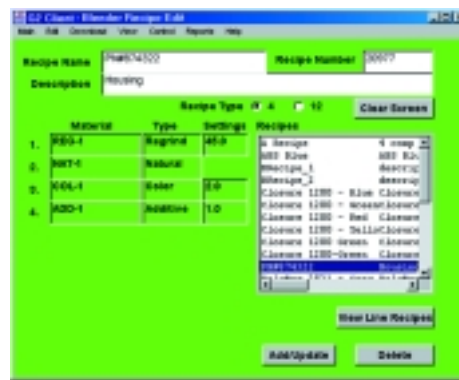
When MECN is combined with G2 software it provides an increased emphasis on materials management – reaping the benefits of higher productivity through improved documentation and inventory control.

A brief overview of G2

The Gravimetric Gateway™ Server, or G2 Server, is the name given to the server software written exclusively for the Maguire Weigh Scale Blenders. The G2 Server enables you to communicate directly from the server with one or more WSB controllers or connect remotely from anywhere over a TCP/IP network using the Gravimetric Gateway™ Client software. The server provides two way communication with the network of blenders for constant retrieval of information such as:

- 1 Precise weight of all materials processed
- 2 Settings – sending and retrieving
- 3 Recipe numbers
- 4 Work-order numbers
- 5 Operator numbers

The G2 Server organizes and tracks material usage and allows the user to gather accurate information according to a number of factors including; time range (day, shift etc), machine, work order, operator, recipe, line and line recipe.



Raw Materials Database Feature

The G2 Server allows you to maintain a raw materials database and build recipes from this database for all of the products the processor manufactures.

Additional Features Include...

G2 provides the ability to remotely control blenders using the most basic keypad commands.

The G2 server allows multiple remote clients to connect to the server simultaneously for controlling, monitoring and accessing data from the network of blenders.

In coextrusion applications the G2 server enables the user to simultaneously download separate recipes for each layer.

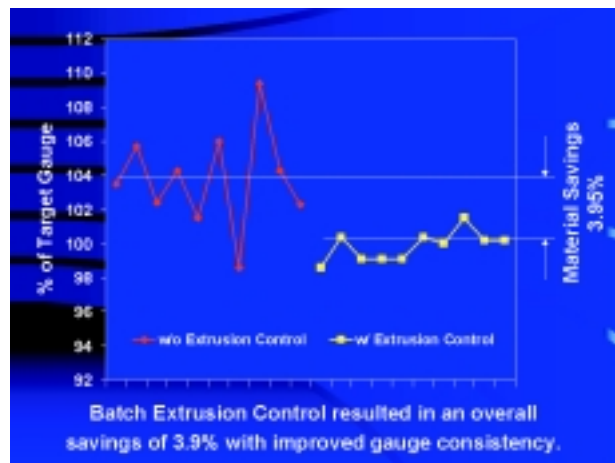
Finally, the system is menu driven and very user friendly. The package is ready to go with very little training or start-up time required.

Extrusion Control Case Study

A blown film processor in the United Kingdom conducted an extensive test of the extrusion control network using a batch gravimetric blender. The process was set up to produce the following:

<i>Product</i>	Monolayer Blown Film
<i>Material</i>	Virgin LDPE, Slip Agent (1%) and Masterbatch (3%)
<i>Material usage rate</i>	220lb/hr
<i>Gauge spec</i>	± 1.5 m

Variation from gauge tolerance was monitored during ten production runs during one week without batch extrusion control, followed by ten runs over the same time period with batch extrusion control installed. Film gauge ranged from 71 m to 38 m.



During the first ten production runs without the use of batch extrusion control, the film gauge averaged 103.81% of target. During the next ten runs with batch extrusion control in use the film gauge averaged 99.14% of target gauge resulting in an average raw material savings of 3.95%.

Vacuum Takeoff Stands



Model VTA-2 shown
w/WSB-140R

Maguire vacuum take-off assemblies allow you to blend on the floor and convey to the process machine. The stands include a bin with sloping sides and a single material pick-up lance at the bottom of the bin. Sight glass windows are located on each side of the bin and are sized to allow additional suction tubes to be added for conveying material to several machines. Up to four lances can be added without sheet metal modification.

Conveying air enters the far side of the suction tube through a stainless screen filter and pulls material into the airflow for conveying. Each tube can be rotated to vary the air/material mix for optimum conveying. Once optimum flow is achieved, a locking set screw secures the tube. A hinged cleanout door is located in the bottom of the bin.

VTA-1 stands accommodate the MicroBlender and 100 Series blender, VTA-2 stands are for use with 200 and 400 Series, and VTA-9 stands are for use with 900 and 1800 Series blenders.

- All VTA stands are 27" high by 36" wide.
- VTA-1 holds 1 cubic foot of material and has a 36"x 36" footprint.
- VTA-2 holds 2 cubic feet of material and has a 36"x 36" footprint.
- VTA-9 holds 3 cubic feet of material and has a 36"x 42" footprint.
- One suction tube is standard, and up to twelve may be added for feeding twelve process machines.
- FCA (Flow Control Assembly) is required for all stands. 6" wheels are also available.

AWS-2 Barrel or Gaylord Style Stands



Model AWS-2B shown
w/WSB-240R

Barrel Stands

Barrel stands allow blending into a 220 lb – 100 kg capacity container.

- AWS-1B for 100 Series blender
- AWS-2B for 200/ 400 Series blender
- AWS-9B for 900 / 1800 Series blender
- 40" high by 36" wide
- 31"x 51" footprint
- FCA (Flow Control Assembly) is required for all stands. 6" wheels are also available.

Gaylord (Octobin) Stands

These stands allow blending into large containers such as gaylords, octobins, etc.

- AWS-1G for MB/100 Series blender
- AWS-2G for 200/ 400 Series blender
- AWS-9G for 900 / 1800 Series blender
- 48" high by 56" wide
- 51"x 63" footprint
- FCA (Flow Control Assembly) is required for all stands. 6" wheels are also available.

Hopper Extensions



Model WSB-440
shown with WWR-2
hopper extension

Hopper Extensions are available when additional hopper capacity is required. The flared design also allows the use of larger capacity loaders.

- WWR-1 for WSB-100 Series blender
- WWR-2 for WSB-200/400 Series blender
- WWR-9 for WSB-900 Series blender
- WWR-18 for WSB-1800 Series blender

MCSH Clear-Vu™ Surge Hoppers



Model MCSH-50
shown on WSB-440R

The Clear-Vu™ surge hopper allows you to mount your Weigh Scale Blender over the throat of the process machine while maintaining a reasonable reserve of blended material. This adds a cushion of time in the event of any disruption of material flow to and through the blender.

Clear-Vu™ hoppers are available in 5, 15 and 50 pound capacity sizes. A strong frame supports the blender mounted on top while the clear hopper is removable for cleanout. The frame is welded structural angle iron; the clear hopper is constructed of strong and lightweight 1/16" polycarbonate sheet.

- Material level is clearly visible from all angles.
- Hopper is removable for easy cleanout (no tools needed).
- Material shutoff gate allows removal of hopper while still full.
- Access to feed throat is possible with hopper removed.

Removable Hoppers



MB Hopper

Removable minor ingredient hoppers are available to improve the ease of color or additive change. With vertical dispense valves mounted inside, removable hoppers are suitable for nearly any fractional percentage of dispense.

Processors with frequent product or color changes can easily and quickly empty and refill the removable bins. The lightweight bins are designed with integral shutoffs to eliminate spillage and hinged lids to provide easy cleanout.

Duplicate standby bins that can be pre-loaded with color or additive are available.

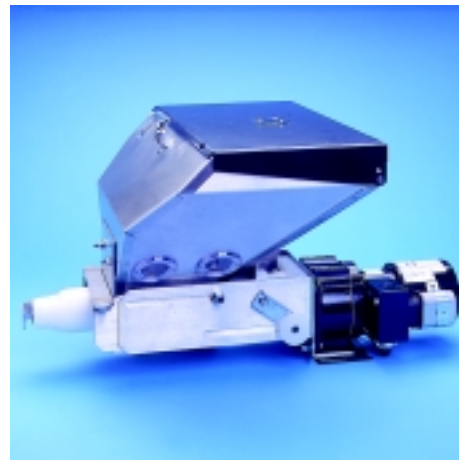


R Hopper



CONTROLLER REMOTE KIT

- AEK-1117 110 volt, 10 ft.
- AEK-1217 230 volt, 10 ft.
- AEK-2117 110 volt, 20 ft.
- AEK-2217 230 volt, 20 ft.
- AEK-5117 110 volt, 50 ft.
- AEK-5217 230 volt, 50 ft.



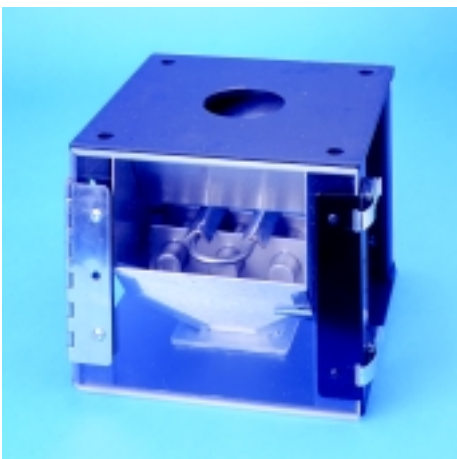
ADD-ON PELLET FEEDER

Model AWF-8



ADD-ON POWDER FEEDER

Model AWF-8P



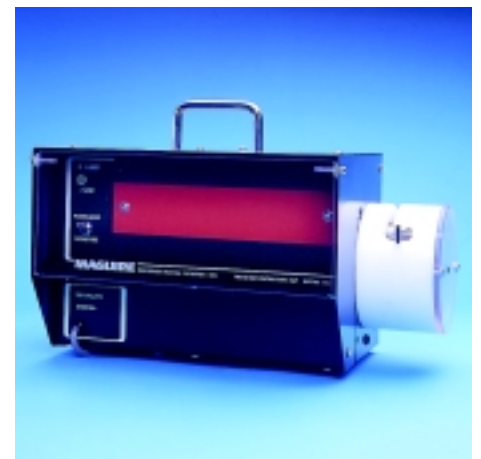
MAGNET DRAWER

Model MMG



DRAIN CHUTES

- 572-1 WSB-100 Series Drain Chute
- 572-2 WSB-200 Series Drain Chute
- 572-4 WSB-400 Series Drain Chute
- 572-9 WSB-900 and 1800 Series Drain Chute



LIQUID COLOR PUMP ADD-ON

Model AWL



LEVEL SENSORS

- ASPS-03 WSB-MB 18mm Level Sensor
- ASPS-02 WSB-100 18mm Level Sensor
- ASPS-01 WSB-200/400/900/1800 30mm Level Sensor



LOAD CELLS

- ALC-MB WSB-MB Load Cell – 3 kg Single Cell
- ALC-1 WSB-100 Load Cell – 3 kg Single Cell
- ALC-2 WSB-200 Load Cell – 3 kg Twin Cells
- ALC-4 WSB-400 Load Cell – 10 kg Twin Cells
- ALC-9 WSB-900 Load Cell – 10 kg Twin Cells
- ALC-18 WSB-1800 Load Cell – 20 kg Twin Cells



MIX MOTORS

- NCR-S5D WSB-MB Mix Motor | Pneumatic
- NCR-S87 WSB-100 Mix Motor | Pneumatic
- M4Z520 WSB-100 Mix Motor | 45 rpm 1/6 HP PSC
- M6Z820 WSB-200 Mix Motor | 60 rpm 1/6 HP PSC
- M6Z818 WSB-400 Mix Motor | 30 rpm 1/6 HP PSC
- MC020P WSB-900/1800 Mix Motor | 1/2 HP



WEIGH BINS

- AS05-MB WSB-MB Weigh Bin
- AS05-1 WSB-100 Weigh Bin
- AS05-2 WSB-200 Weigh Bin
- AS05-4 WSB-400 Weigh Bin
- AS05-9 WSB-900 Weigh Bin
- AS05-18 WSB-1800 Weigh Bin



MIX BLADES

- AS325 WSB-MB Mix Blade Weldment
- 525-1W WSB-100 Mix Blade Weldment
- 525-2W WSB-200 Mix Blade Weldment
- 525-4W WSB-400 Mix Blade Weldment
- 525-9W WSB-900 Mix Blade Weldment
- 525-9W WSB-1800 Upper Mix Blade Weldment
- 525-18W WSB-1800 Lower Mix Blade Weldment



LOW LEVEL ALARM SYSTEM

Reduce monitoring requirements by floor personnel, with the Series LLA alarm systems used to signal HIGH or LOW material-supply conditions. The easy-to-install solid-state sensor can detect pelletized, liquid, or powder material. A bright amber strobe light and an electronic beeper alert the user to an ALARM condition. A duplex receptacle outlet is provided to control a loading system. Power to this outlet is switched off when the sensor is covered. Single-station and multi-station (up to six) models are available.