



## WSB Removable Hopper Series

# Keep your removable hoppers removable

Easily access the removable hoppers by quickly disconnecting the mounting bracket.

### Easy access

Placing loaders directly on the removable hoppers means you can no longer access the removable hoppers. By using the optional mounting bracket, operators need simply twist the quick disconnect a ¼ turn, dropping it into the hopper, to free the removable hoppers.

### Mounting bracket with quick release connections

The WSB 140R, WSB 240R and WSB 440R models come with an optional receiver support mounting bracket for the removable hoppers. This mounting bracket comes with quick release connections so operators can quickly access the removable hoppers for fast material changes and clean out.

KIT-147-1: WSB-140R Removable Hoppers  
Receiver Support Mounting Bracket



### Easy cleanout

The removable hoppers are quick and easy to remove and are designed with hinged lids for easy cleanout.

### Quick color changes

With no bolts or tools required, the removable hoppers are ideal for quick color or additive changes, reducing downtime.



Maguire WSB-240R with  
Mounting Bracket and MREC  
receivers positioned on top



### Simple hopper maintenance

The mounting bracket on the removable hoppers has been designed for operators to quickly undertake any maintenance by simply disconnecting the pneumatic lines in order to access the hoppers.

### Lightweight removable hoppers

The removable hoppers have an integrated dispense valve, eliminating material spillage and ensuring easy cleaning. With no tools required, operators can easily lift the removable hoppers, avoiding any health and safety concerns.



Model as543



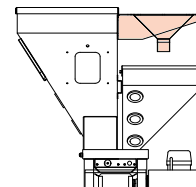
## Technical specification

### REMOVABLE HOPPERS

#### LOADER MOUNTING & QUICK RELEASE

Kit to position receivers to allow quick and easy access to removable hoppers and fast materials changes

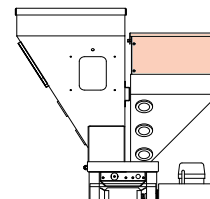
kit-147-1	WSB-140R Removable Hoppers Receiver Support Mounting Bracket with Quick Release Connections
kit-147-2	WSB-240R/440R Removable Hoppers Receiver Support Mounting Bracket with Quick Release Connections



### HOPPER EXTENSION

This provides an additional 21 liters of capacity to the removable hopper, giving 35 liters in total.

WRR-1R-L	Hopper Extension, Removable Hopper, Left / ADDITIVE WSB-100, 200, 400 R
WRR-1R-R	Hopper Extension, Removable Hopper, Right / ADDITIVE WSB-100, 200, 400 R

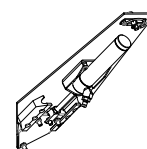


### OPTIONS FOR REMOVABLE HOPPERS

#### REMOVABLE HOPPER - CORNER VALVE

Requested configuration on R Series blenders or Retrofit to blender. Use when high percentage setting required via Removable Hopper, typically above 5%, or for poor flowing materials such as regrind. Note volume capacity of the Corner Valve hopper is 14 liters.

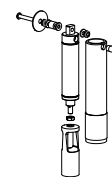
as544L	Removable Hopper Complete Assembly (R Series Blenders), Corner Valve, Left (Additive) Position
as544R	Removable Hopper Complete Assembly (R Series Blenders), Corner Valve, Right (Color) Position



#### REMOVABLE HOPPER - PIVOT VALVE

Standard configuration on R Series blenders – setting typically for 0.5% to 5.0% on free flowing materials. Minimum dispense above 10 grams of the batch size. Note volume capacity of the Pivot Valve hopper is 14 liters.

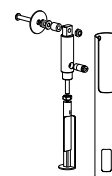
as543-2L	Removable Hopper Complete Assembly (R Series Blenders), Pivot Valve 1.25", Left (Additive) Position
as543-2R	Removable Hopper Complete Assembly (R Series Blenders), Pivot Valve 1.25", Right (Color) Position



#### REMOVABLE HOPPER - CAROUSEL VALVE

Requested configuration on R Series blenders or Retrofit to blender. Setting typically for very small dispenses, 0.5% to 2.0% on free flowing materials – minimum dispense is below 10 grams of the batch size. Note volume capacity of the Carousel Valve hopper is 14 liters.

as543-2LC	Removable Hopper Complete Assembly (R Series Blenders), Carousel Micropulse Valve, Left (Additive) Position
as543-2RC	Removable Hopper Complete Assembly (R Series Blenders), Carousel Micropulse Valve, Right (Color) Position



#### CAROUSEL VALVE RETROFIT

Kit to replace a standard 1.25" Pivot Valve to Carousel Valve - R Series WSB post 2003

kit-104A	Carousel Micropulse Valve, Left (Additive) Position for existing Removable Hopper (Post 2003). Additional liter capacity.
kit-105B	Carousel Micropulse Valve, Right (Color) Position for existing Removable Hopper (Post 2003). Additional liter capacity.



Maguire reserves the right to cancel product or change product, product specifications and data without notice to improve reliability, function, design or otherwise.



#### MAGUIRE WORLDWIDE DISTRIBUTION LOCATIONS

##### Maguire USA

Aston, PA, USA  
T: +1 610 459 4300  
F: +1 610 459 2700  
E: info@maguire.com

##### Maguire Canada

Ontario, Canada  
T: +1 905 879 1100  
F: +1 905 879 1101  
E: info@maguirecanada.com

##### Maguire Europe

Staffordshire, UK  
T: +44 1827 338 280  
F: +44 1827 338 285  
E: info@maguire-europe.com

##### Maguire IMEA

Dubai, UAE  
T: +971 4 881 6700  
E: info@maguire-imea.com

##### Maguire Asia

Singapore  
T: +65 6848 7117  
F: +65 6542 8577  
E: magasia@maguire-products.com.sg

##### Maguire China

Beijing  
T: +86 21 5882 3410  
F: +86 21 5882 3420  
E: amber@maguirechina.com