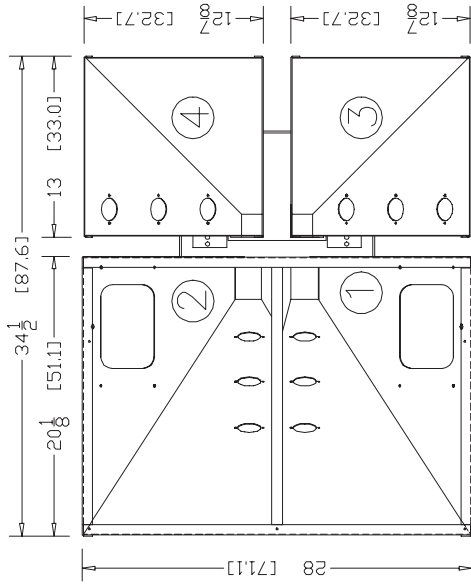
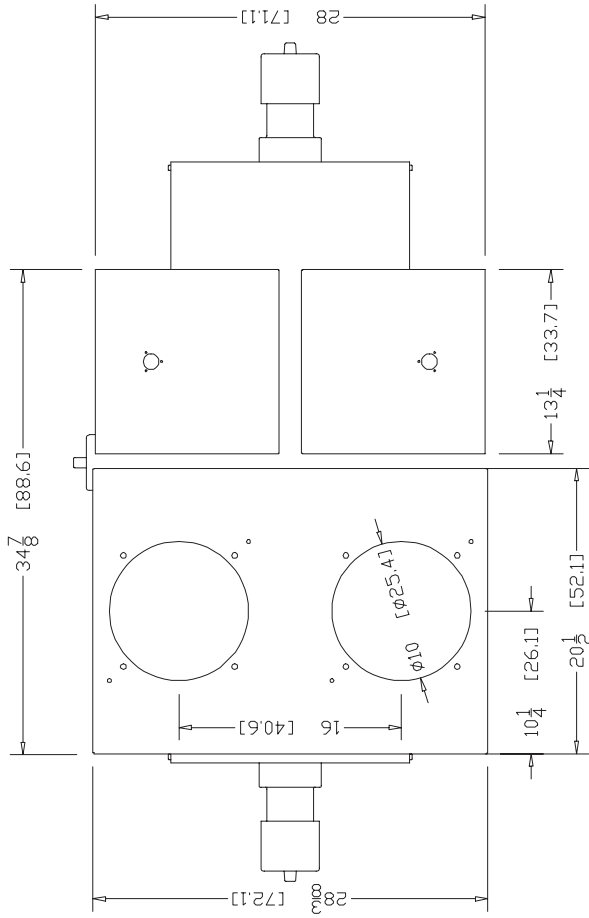


WSB-242R HOPPER TOP VIEW

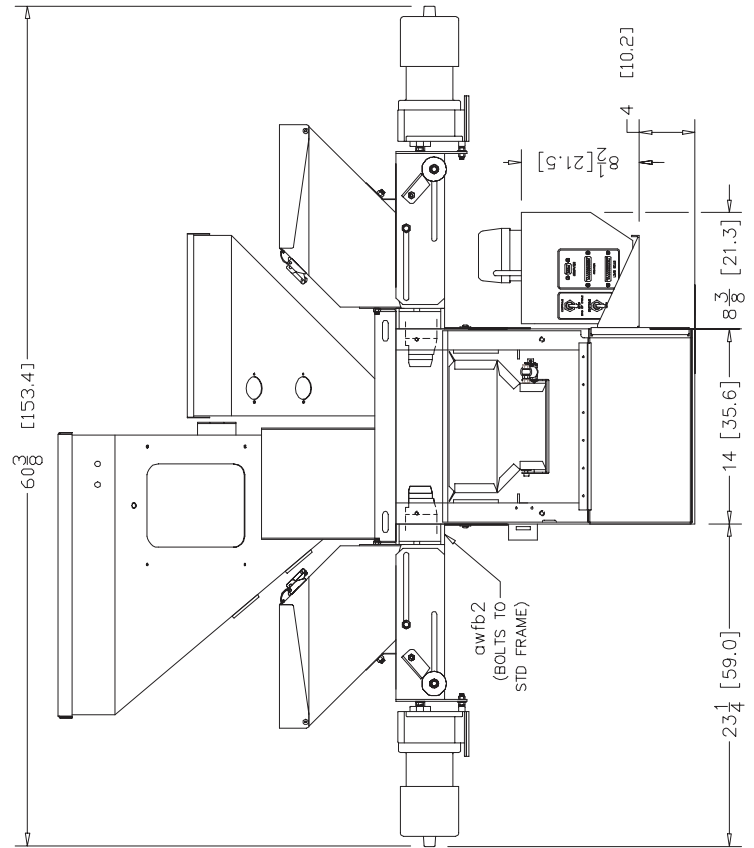


Compartments 1 & 2 are approx. 1.2 cu ft [33.6 Litres]  
 Compartments 3 & 4 are approx. .9 cu ft [25.5 Litres]

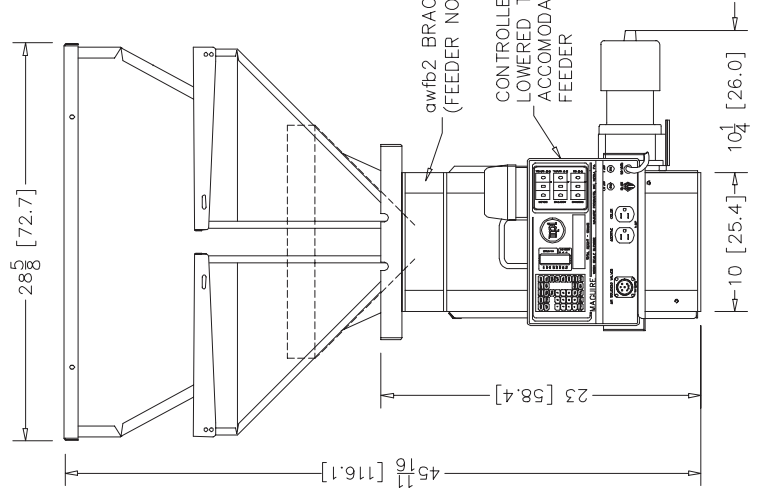
WSB-242R LID TOP VIEW



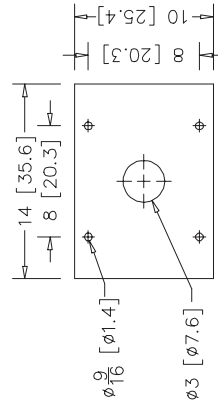
WSB 242R FRONT VIEW



WSB 242R SIDE VIEW



WSB 242R "FOOTPRINT"



STD 14 x 10 WSB BOTTOM PLATE  
 1/4" STEEL PLATE

ALL DIMENSIONS ARE IN INCHES [CENTIMETERS]



MAGUIRE PRODUCTS, INC.  
 11 Crozerville Road, Aston, PA 19014  
 Tel: (888) 459-2412  
 Fax: (610) 459-2700  
<http://www.maguire.com>

WSB 242R PICTORIAL

DRAWN BY: CCG

DATE: 5/12/98