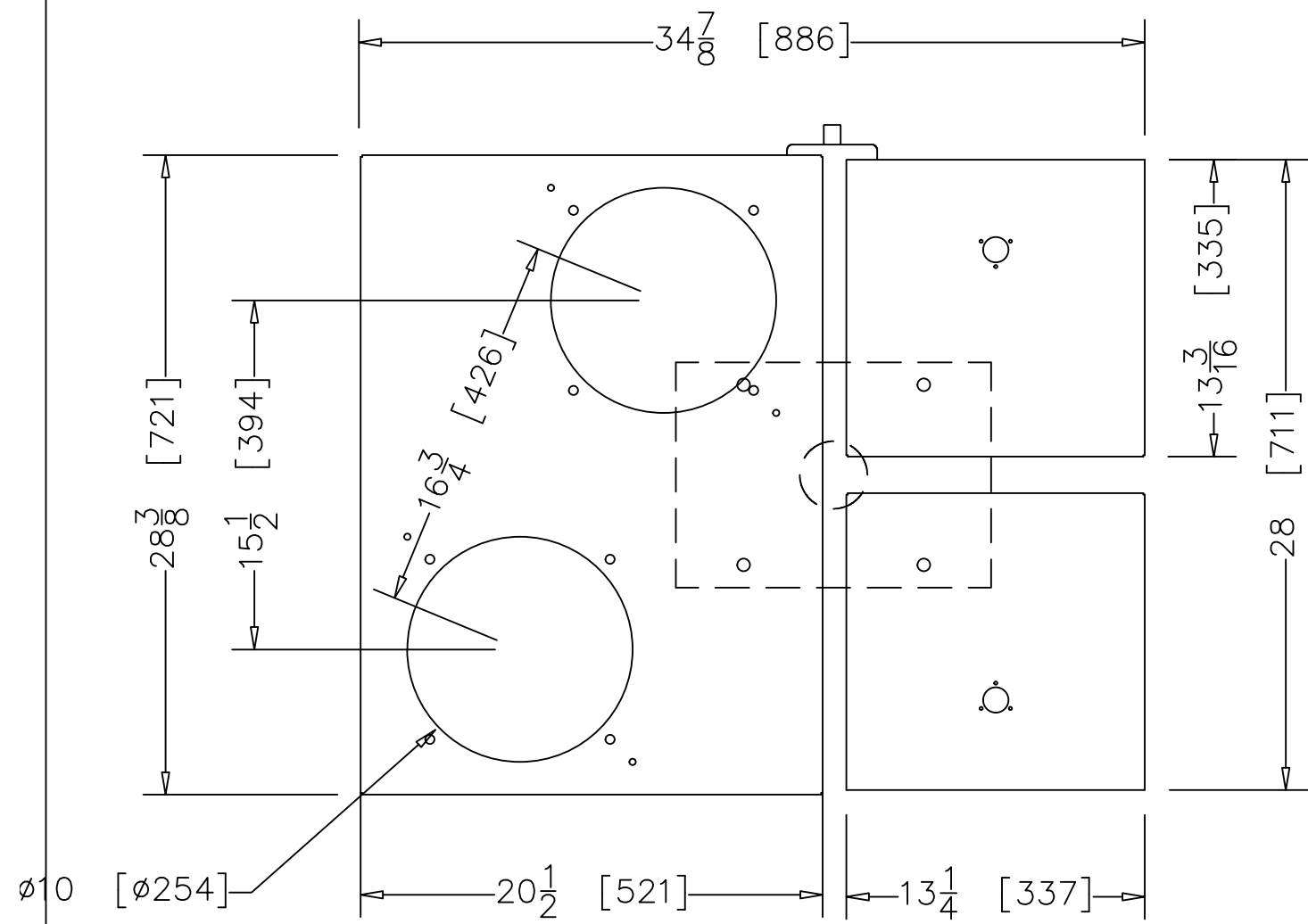
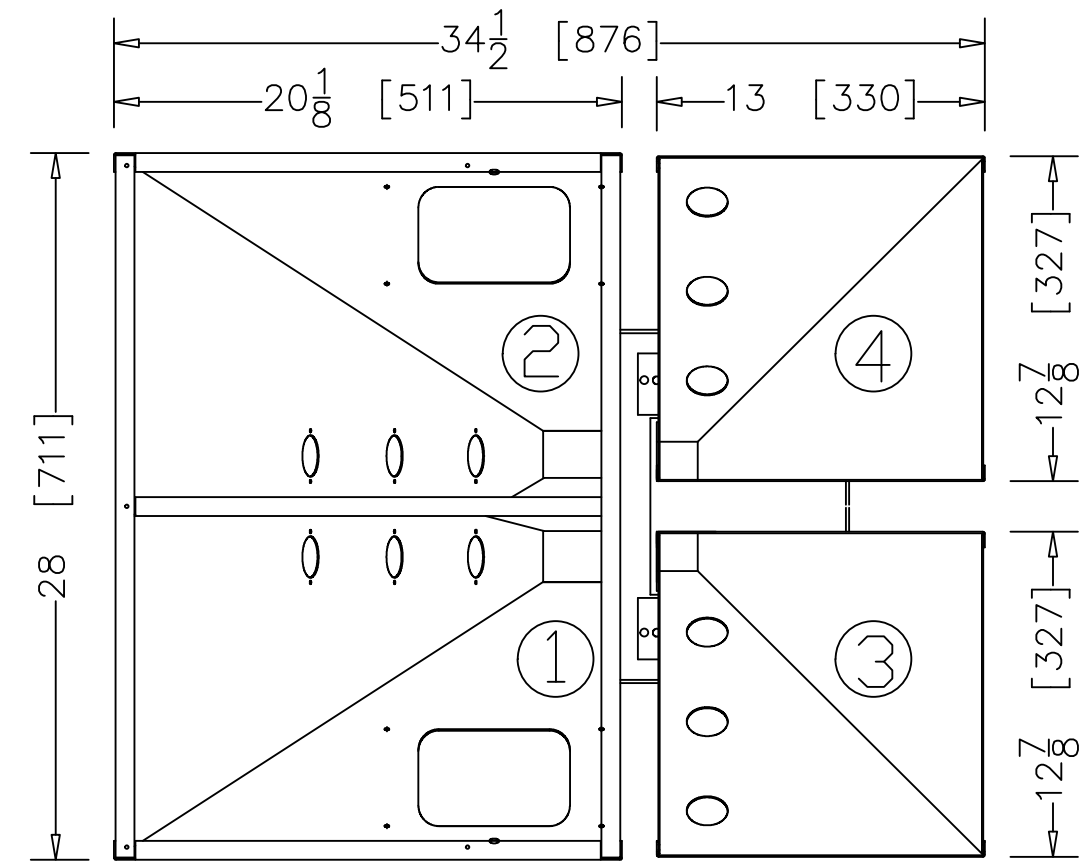


WSB-440R LID TOP VIEW

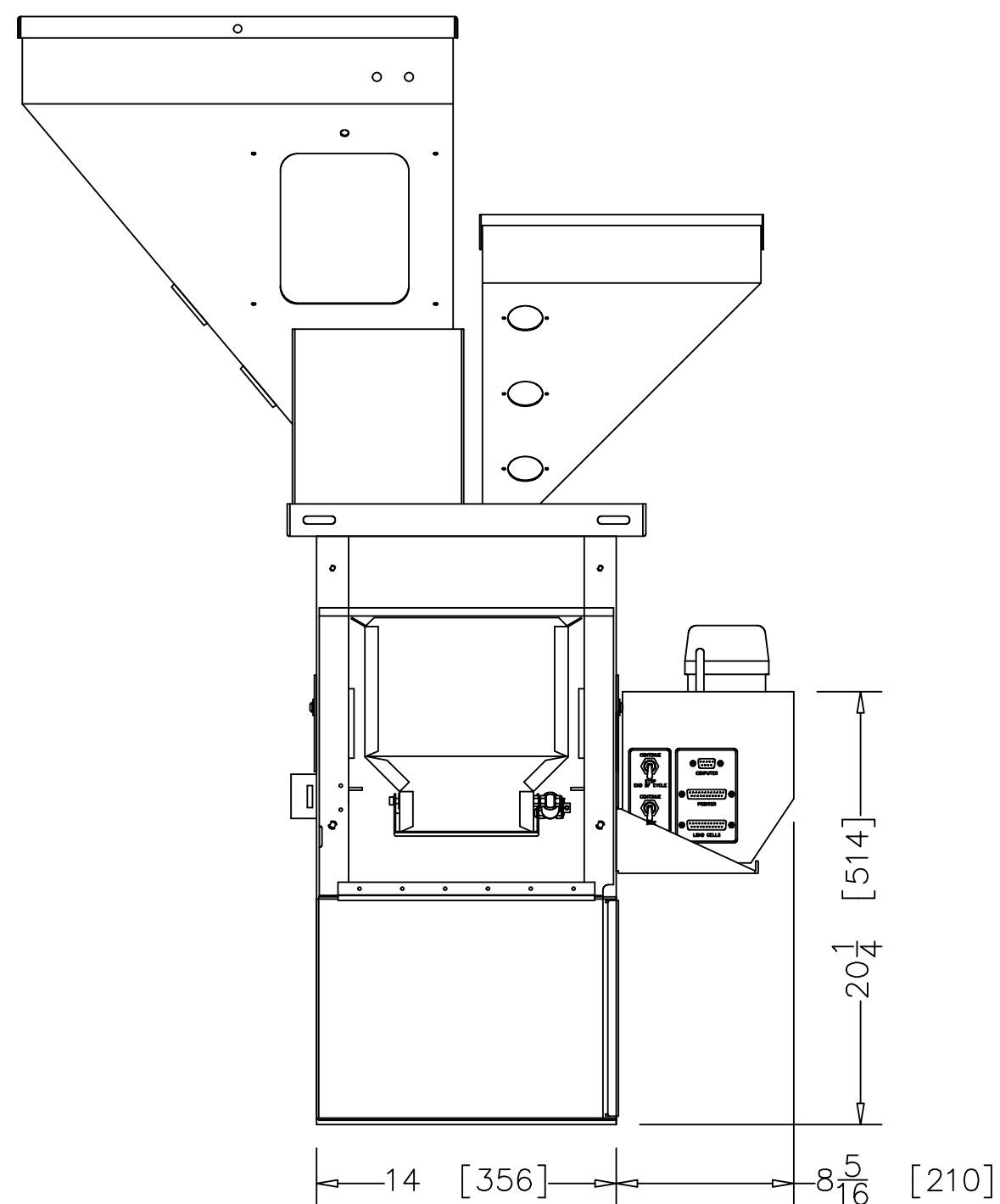


WSB-440R HOPPER TOP VIEW

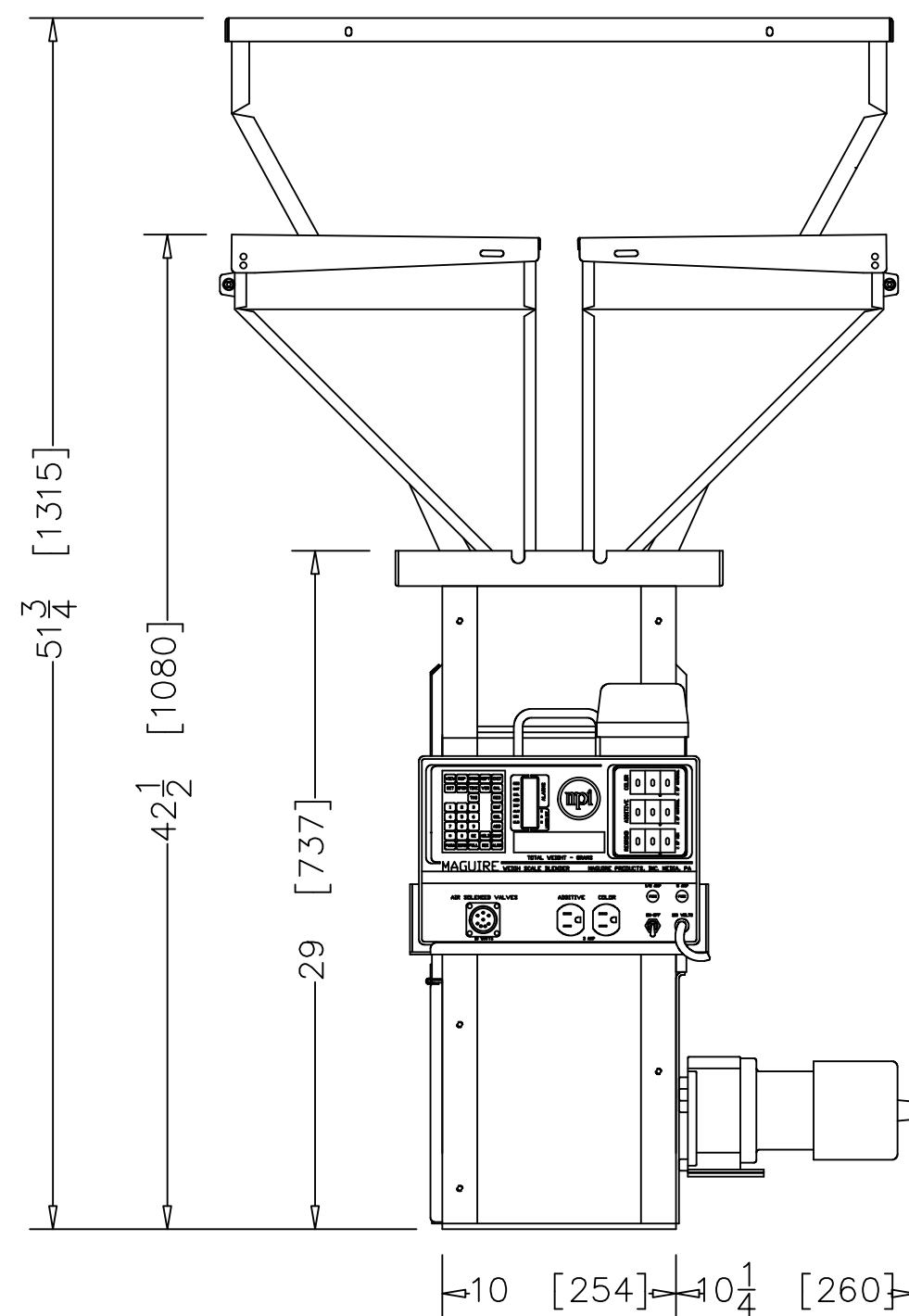


Compartments 1 & 2 are approx.
1.2 cu ft [34 Litres]
Compartments 3 & 4 are approx.
.5 cu ft [14 Litres]

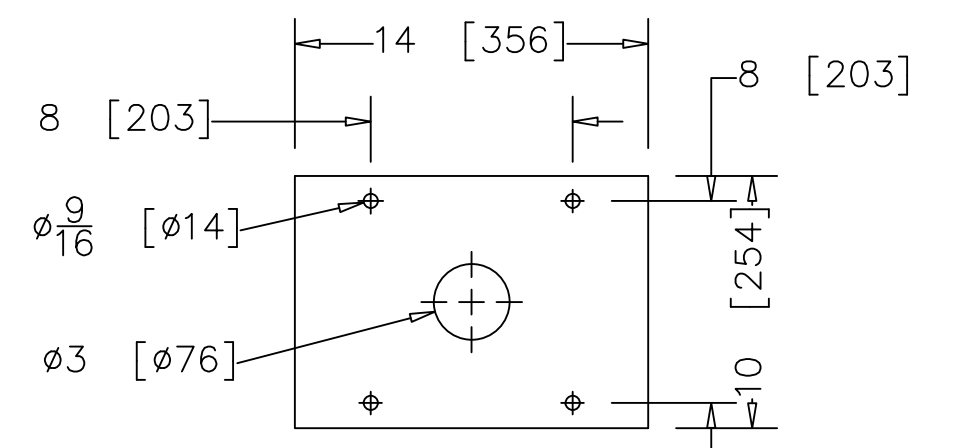
WSB 440R FRONT VIEW



WSB 440R SIDE VIEW

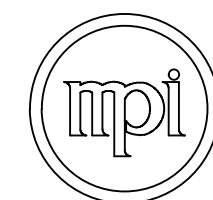


WSB 440R
"FOOTPRINT"



STD WSB BOTTOM PLATE
 $\frac{1}{4}$ " [6.4] STEEL PLATE

All dimensions are in
inches [millimeters]



MAGUIRE
PRODUCTS, INC.
11 Crozerville Road, Aston, PA
Tel: (888) 459-2412
Fax: (610) 459-2700
<http://www.maguire.com>

Model WSB-440R
Pictorial

DRAWN BY: CGC	DATE DRAWN: 12/16/97
MAT'L:	FINISH: