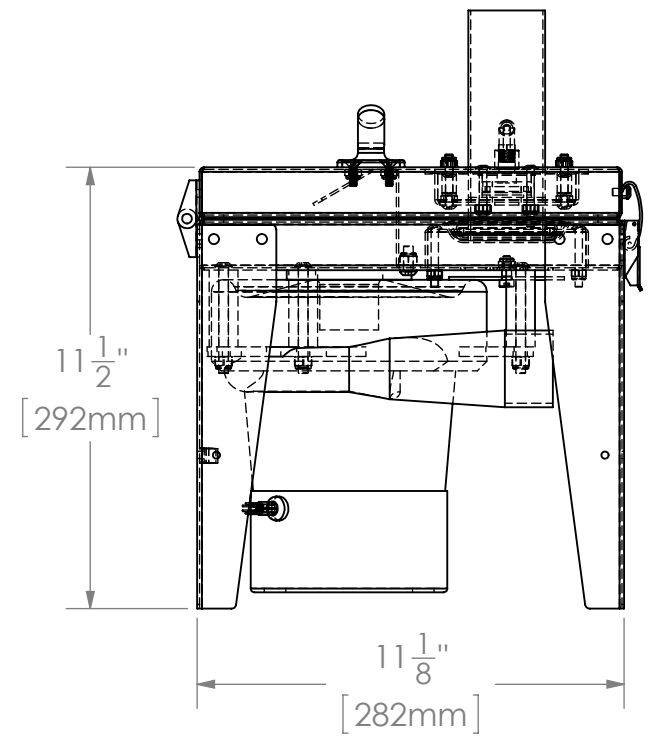
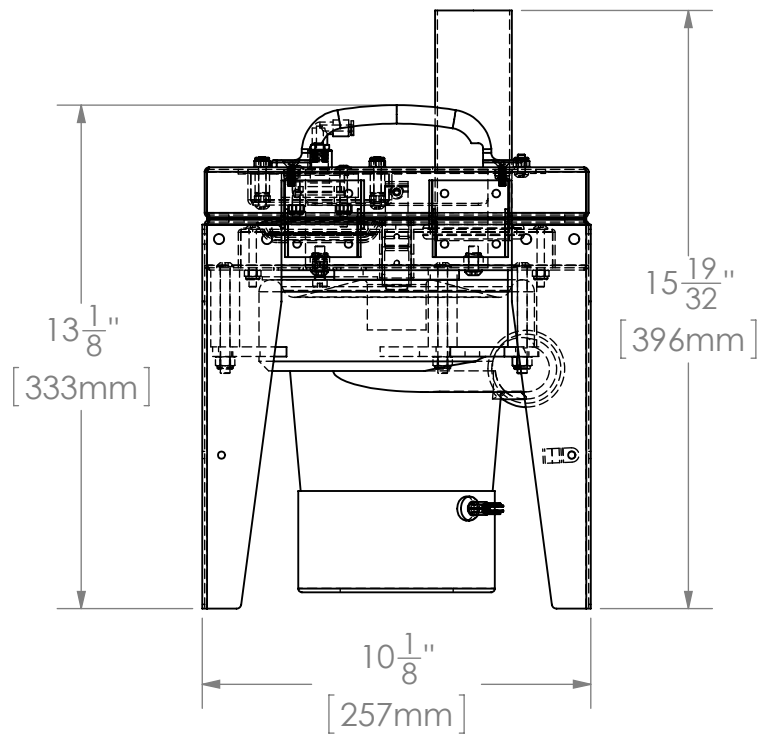
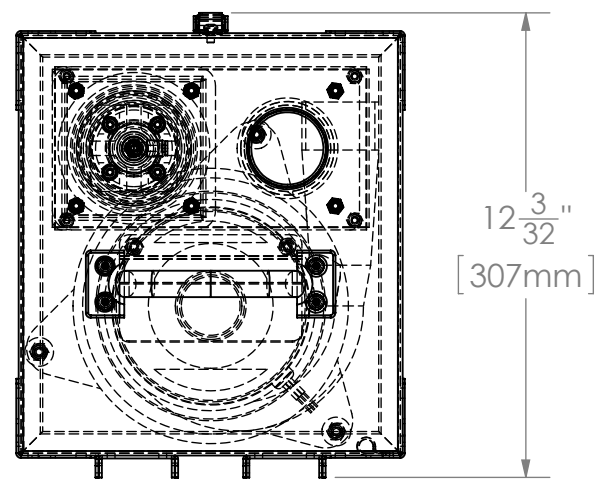
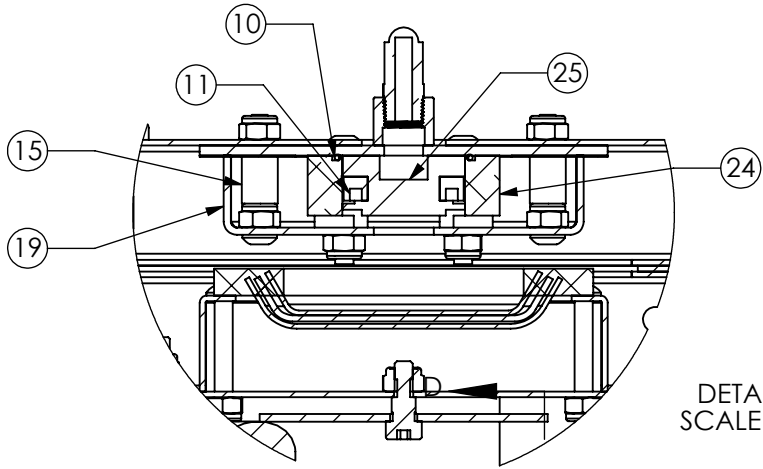


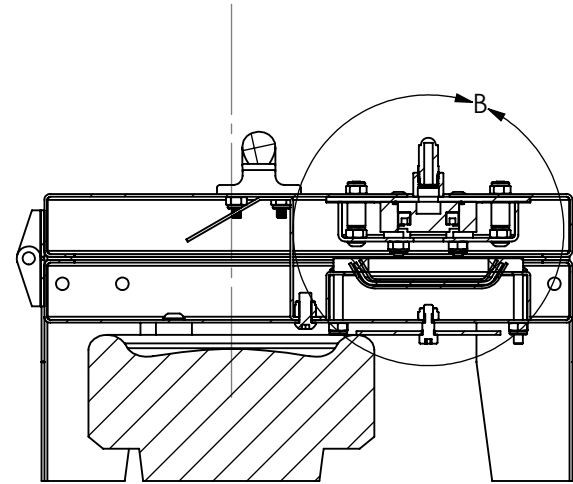
ITEM NO.	PART NUMBER	DESCRIPTION	QTY.
1	2" Stub Tube	2" Stub Tube	1
2	4464K221	Threaded Pipe Fitting, 1/8 Pipe Size, Half Coupling, SS (McM #4464K221)	1
3	7059-H1	Hinge, Inside Leaf	2
4	7059-H2	Hinge, Outside Leaf	2
5	92415A660	Spacer, 1/8"Lg, .192"ID, 5/16"OD, Zinc-Plated Steel (McM #92415A660)	1
6	98264A200	Zinc-Plated Steel Oversized Flat Washer, 1/4" Screw Size, 0.281" ID, 3.000" OD	1
7	Ametek 121113-13	Ametek 121113-13 Blower / Vacuum Motor (7.2 in. 120 V 2-Stage)	1
8	ehg32-02	Grommet, 2" ID, 1/8" Panel Thickness, 2 1/4" Panel Hole, 2-5/8" OD, 3/8" Overall Thickness (McM #9600K127)	1
9	fpe-5^32	Elbow, Male, 1/8 MPT x 5/32 press-to-lock	1
10	go-027	O-Ring, #-027 (1.3125 x 1.4375)	1
11	gu04-20	U-Cup Seal 1/4" Height, 1/4" ID, 3/4" OD	1
12	hh08	\$1.19 WSB-9 Grab Handle (Sierra Pacific #917)	1
13	hI04	Draw Latch, Short Length, WSB Door	1
14	hsp4-32	Spacer, 1/4" ID x 2" Long, Ø.75 OD	3
15	hsp#10-08	Spacer, #10 ID x .5 Long, Ø.375 OD	4
16	MCP-01	Main Box, MCP	1
17	MCP-01L	Lid, MCP	1
18	MCP-01P	Stiffening Plate, MCP Lid	1
19	MCP-05	Blowback Plate, MCP	1
20	MCP-05G	Sheetmetal Flanged Panel	1
21	MCP-10	Leg, MCP	4
22	MCP-25	Filter Box, MCP	1
23	MCP-26	Lid Support Bracket, MCP	1
24	MCP-30	Blowback Ring, MCP	1
25	MCP-31	Piston, Blowoff, MCP	1
26	MCP Gasket	MCP Gasket	1
27	NGS-06G	Gasket, Vac Motor, NGS Loader	1
28	P-clip	P-clip	1
29	sb4-10	BHCS, 1/4-20 x .625	2
30	sb4-44	BHCS, 1/4-20 x 2.75	3
31	sb#10-06	BHCS, #10-24 x .375	1
32	sb#10-08	BHCS, #10-24 x .5	2
33	sb#10-20	BHCS, #10-24 x 1.25	7
34	sb#10-24	BHCS, #10-24 x 1.25	5
35	sf#10-12	Flat Head Cap Screw, #10-24 x 3/4	4
36	sh4-04	Shoulder Bolt	1
37	snn4	Nylok, 1/4-20	5
38	snn#10	Nylok, #10-24	23
39	hfdd3	3" Dacron Filter	1



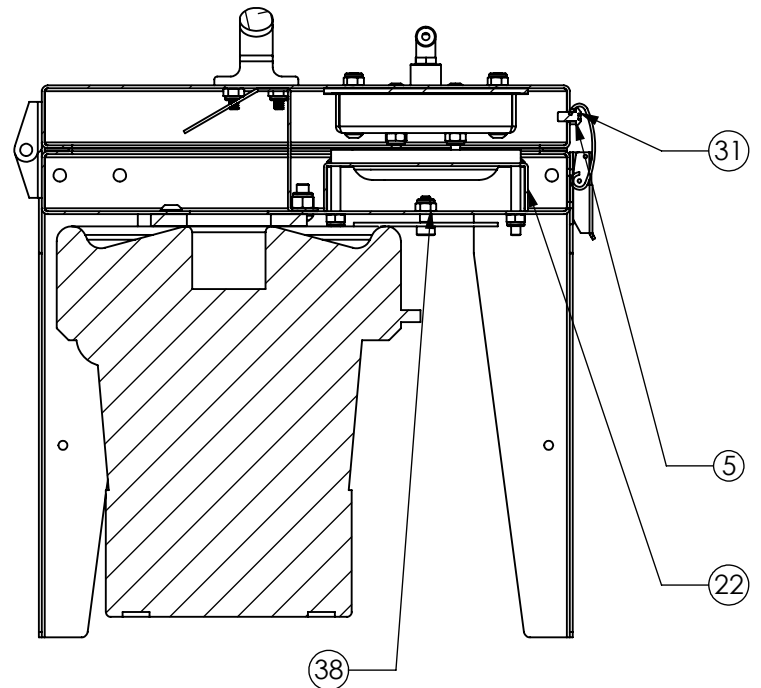
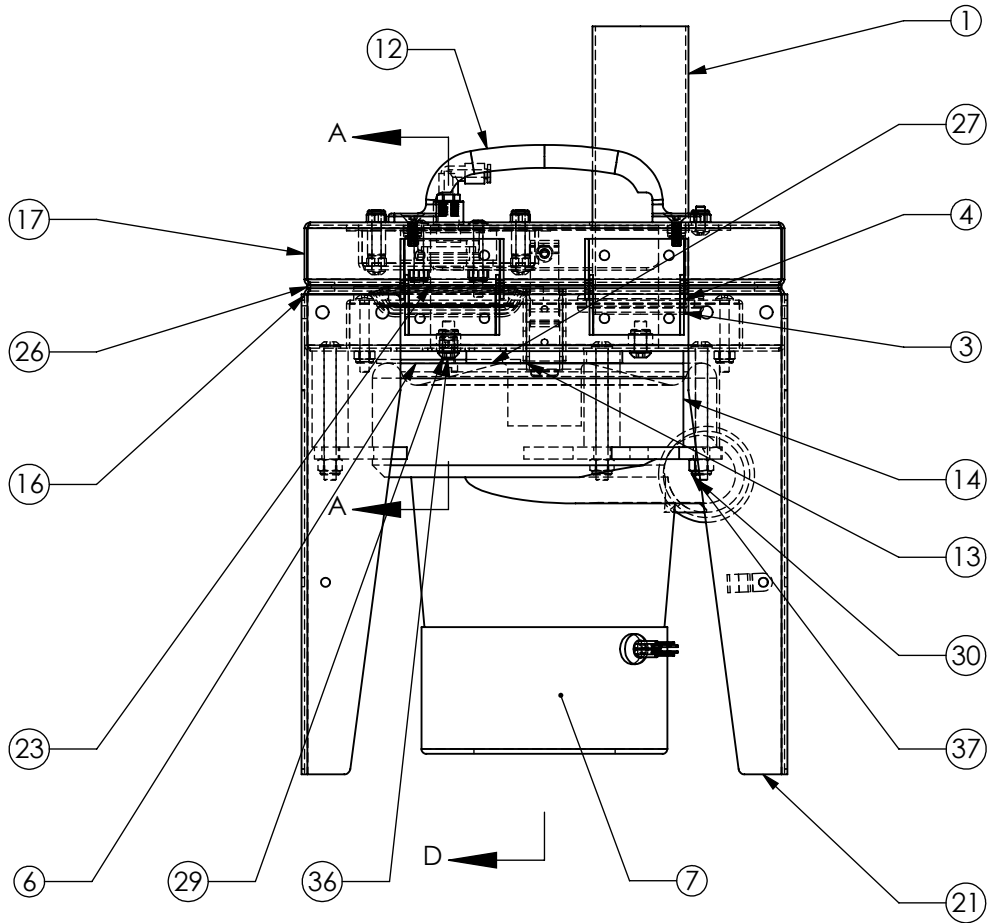
THE INFORMATION CONTAINED IN THIS DRAWING IS THE SOLE PROPERTY OF MAGUIRE PRODUCTS, INC.		MAGUIRE	
UNLESS OTHERWISE SPECIFIED DIMENSIONS ARE IN INCHES TOLERANCES ARE: FRACTIONS ±1/64 DECIMALS .XX ±.01 ANGLES ±1° .XXX ±.005		TITLE: Mini Central Power Unit	
BREAK ALL SHARP EDGES AND CORNERS		ASSEMBLY NOTES Application Next Ass'y Used on	
Created: Thursday, December 11, 2014 12:50:38 PM		SIZE B DWG. NO. asMCP-01 REV A	
Last Save: Wednesday, September 02, 2015 11:13:52 AM		SCALE: 1:5 WEIGHT: SHEET 1 OF 2	
Drawn By: JSH Last Saved By: Administrator			
Folder: C:\MPI\JH_STEVE\Mini Central Power Unit\			



DETAIL B
SCALE 1 : 2



SECTION A-A



SIZE	DWG. NO.	REV
A	asMCP-01	A
SCALE: 1:4	WEIGHT:	SHEET 2 OF 2